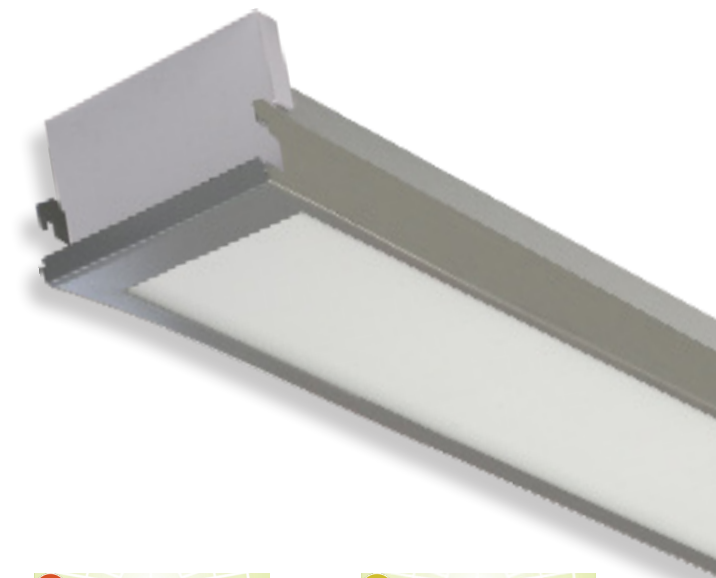


# Linear 100 **RH215 Interlock**

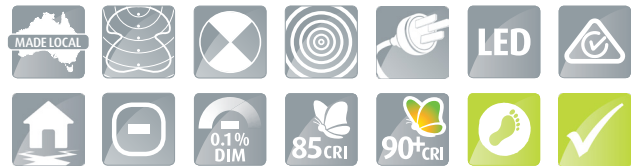
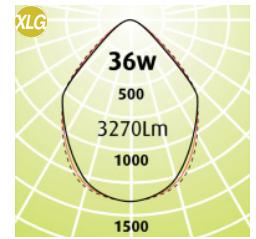
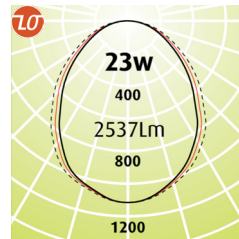


- Specially designed to clip in neatly to an Armstrong RH215 metal ceiling
- We are able to engineer to different ceiling types
- Width stays the same, length can vary
- Air Supply Module available
- Selection of optics throughout the range
- LED Outputs and LED Lamp Colour options available
- The Linear100 has a de-clutter options contact your local LimeLite representative for more information
- Cost effective compared to the 300 wide fittings (smaller footprint)
- Luminaire lifetime L80/B10 >60,000hours
- MacAdams 3 SDCM

### Options

- Ultra Dim (Extra Low Dimming to 0.1%)
- Dim (Dali Dimming to 1%)
- EM-LED (LED Emergency) c0 D20 / c90 D20
- EM-LED-EDALI (Monitored option) c90 D20
- ER (Earthquake Resistant)
- 90+CRI

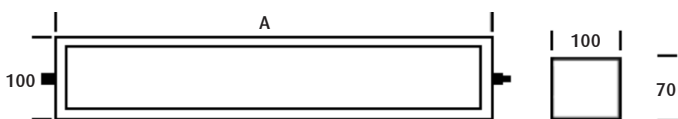
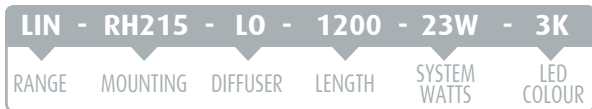
**Eg Code** LIN-RH215-LO-1200-23W-3K



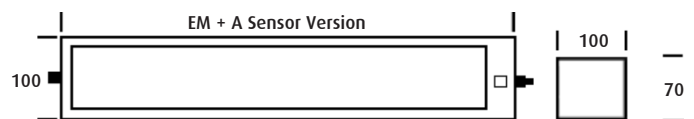
Code	Absolute Lumens		Dimensions	
	4K		A	Width
LIN - RH215 - <b>LO</b> - 1200 - 23W - (2.7 or 3 or 4K)	2537Lm		1197	100
LIN - RH215 - <b>XLG</b> - 1200 - 23W - (2.7 or 3 or 4K)	2232Lm		1197	100
LIN - RH215 - <b>LO</b> - 1200 - 36W - (2.7 or 3 or 4K)	3716Lm		1197	100
LIN - RH215 - <b>XLG</b> - 1200 - 36W - (2.7 or 3 or 4K)	3270Lm		1197	100
LIN - RH215 - <b>LO</b> - 1200 - HO - (2.7 or 3 or 4K) <b>HO</b>	4260Lm		1197	100
LIN - RH215 - <b>XLG</b> - 1200 - HO - (2.7 or 3 or 4K) <b>HO</b>	3782Lm		1197	100

**Other Lengths available on request**

### LED PRODUCT LEGEND



**Standard Version**



**LED Emergency Version**