

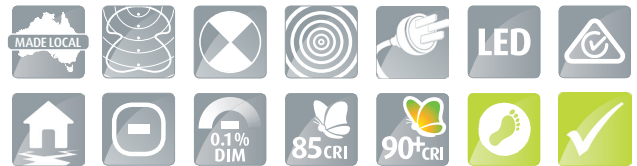
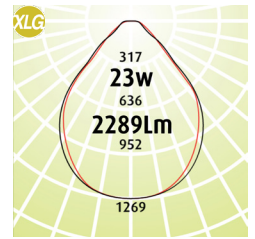
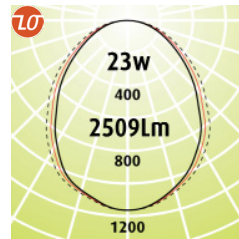
Linear 300 Tee-Bar

- Linear 300 Tee-Bar is specifically designed for a teebar ceiling
- Air Supply or air return are available on request
- Suits 300 wide Tee-Bar where new installations or replacement of existing luminaires are required
- Selection of optics throughout the range
- LED Outputs and LED Lamp Colour options available
- XLG Diffuser UGRmax: 17
- Luminaire lifetime L80/B10 >60,000hours
- MacAdams 3 SDCM

Options

- Ultra Dim (Extra Low Dimming to 0.1%)
- Dim (Dali Dimming to 1%)
- EM-LED (LED Emergency) c0 D20 / C90 D20
- EM-LED-EDALI (Monitored option) c90 D20
- LSL (LimeLite Sensor Light)
- AH (Air Handling)
- 90+CRI

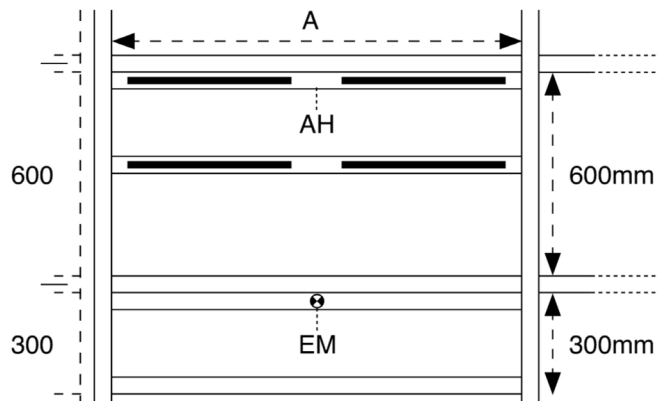
Eg Code LIN-T300-LO-1200-23W-3K



Code	Absolute Lumens		Dimensions
	LO	XLG	A
LIN - T300 - (LO OR XLG OR FL) - 600 - 13W - (2.7 or 3 or 4K)	1255Lm	1145Lm	600
LIN - T300 - (LO OR XLG OR FL) - 600 - 19W - (2.7 or 3 or 4K)	1837Lm	1676Lm	600
LIN - T300 - (LO OR XLG OR FL) - 1200 - 23W - (2.7 or 3 or 4K)	2509Lm	2289Lm	1200
LIN - T300 - (LO OR XLG OR FL) - 1200 - 36W - (2.7 or 3 or 4K)	3674Lm	3352Lm	1200

LED PRODUCT LEGEND

LIN	-	T300	-	LO	-	1200	-	23W	-	3K
RANGE		MOUNTING		DIFFUSER		LENGTH		SYSTEM WATTS		LED COLOUR



Tee-Bar Version