

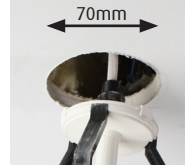


2B Hung Archer Installation Instructions



Step 1

Mark and Cut 70mm hole in ceiling where you want to position the pendant. (For best results use 70mm hole saw).



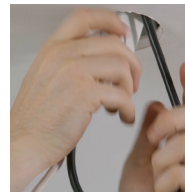
Step 2

Dali dimming option - Connect 2 core low voltage cable from 150w power supply to dali housing, which is attached to 'one motion' ceiling mount.

Universal dimming - Connect switch wire to universal dimming driver which is attached to 'one motion' ceiling mount.

Step 3

Feed cable, dali housing up through 70mm cut out.



Step 4

Hold ceiling plate base and push central barrel up towards ceiling plate to extend flexible arms.



ceiling plate

central barrel



push central barrel up to extend flexible arms

Step 5

Once ceiling plate is push to the ceiling, pull down on central barrel to make flush and seamless.



pull down on central barrel for seamless finish

Step 6

Adjusting height - Take ceiling mount out of the ceiling by pushing up on central barrel to extend flexible arms and pulling down on plate.

Once One Motion is out of the ceiling, twist and unlock the cable lock, slide up or down the cord to adjust height and re-lock. To re-install follow steps 3 - 5.



twist top section of cable lock to unlock and slide along cable