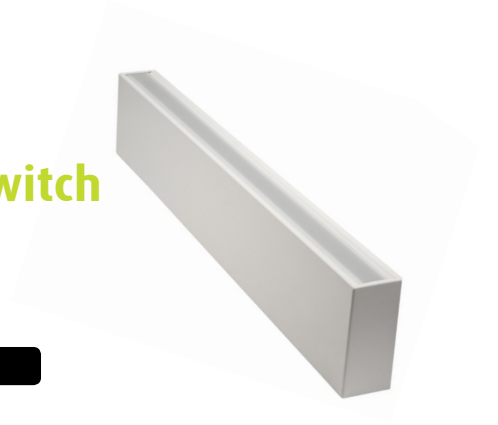


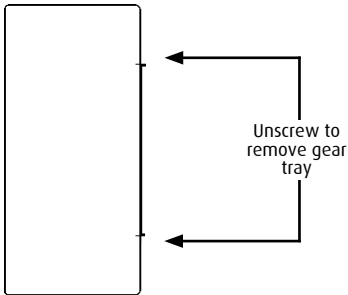


Indirect Lighting **Up/Down V2 -Single Switch** Installation Instructions



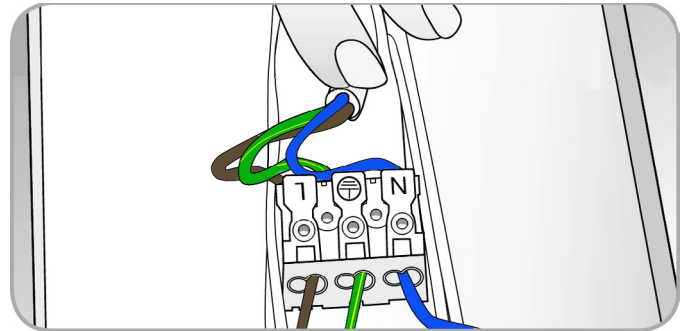
Step 1

Unscrew the 2 screws which secure the body to wall plate.



Step 3

Connect power to terminal blocks.



Step 2

Mount wall plate to wall making sure the gear tray is mounted in correct orientation. See label for up and down position.

Step 4

Secure body to wall plate by sliding down over wall plate. Refit screws on top of body to keep secure.

Please do not press on lenses while installing.